



Ages of Infants

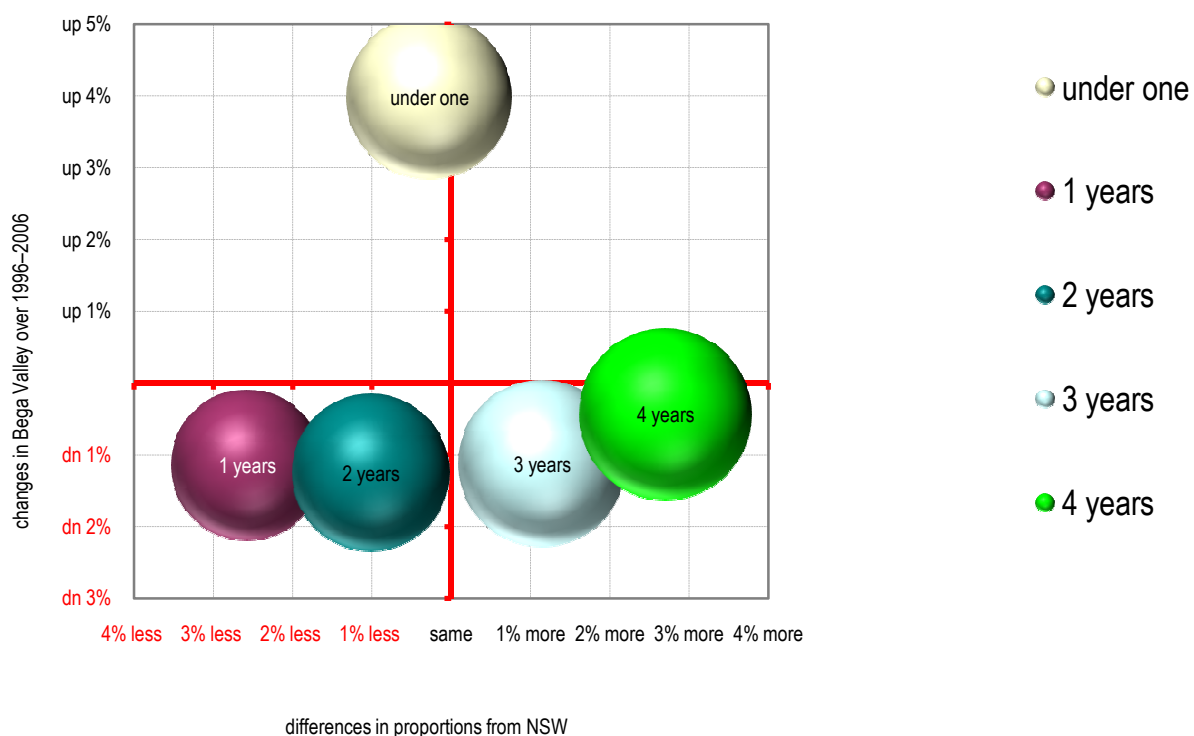
Bega Valley

1996–2006

There were 1,681 infants in Bega Valley distributed across five ages, the most numerous being 4 years (22%) and 3 years (21%). A noticeable local feature is the proportion aged under one (20%), which was relatively smaller than in NSW but growing.

The distribution among the ages was slightly different from NSW's, most notably in Bega Valley's proportions aged 4 years (2.7% higher) and 1 years (2.6% lower).

Over 1996–2006, the distribution pattern changed slightly. Bega Valley's changes were very different from those across NSW – the proportion aged under one, for example, had growth that was 1.9% higher than NSW's.



This 'bubble' chart illustrates the ages of all infants in Bega Valley, comparing the changes in Bega Valley over 1996–2006 with the differences in proportions from NSW. Bubbles that are higher above the red horizontal axis represent ages that had a growing share of the infants over 1996–2006 (eg under one); those below the line had a declining share (eg 2 years). Bubbles further to the right signify ages that had a larger share of the infants in Bega Valley than was found in NSW in 2006 (eg 4 years), while those to the left had a smaller share (eg 1 years).

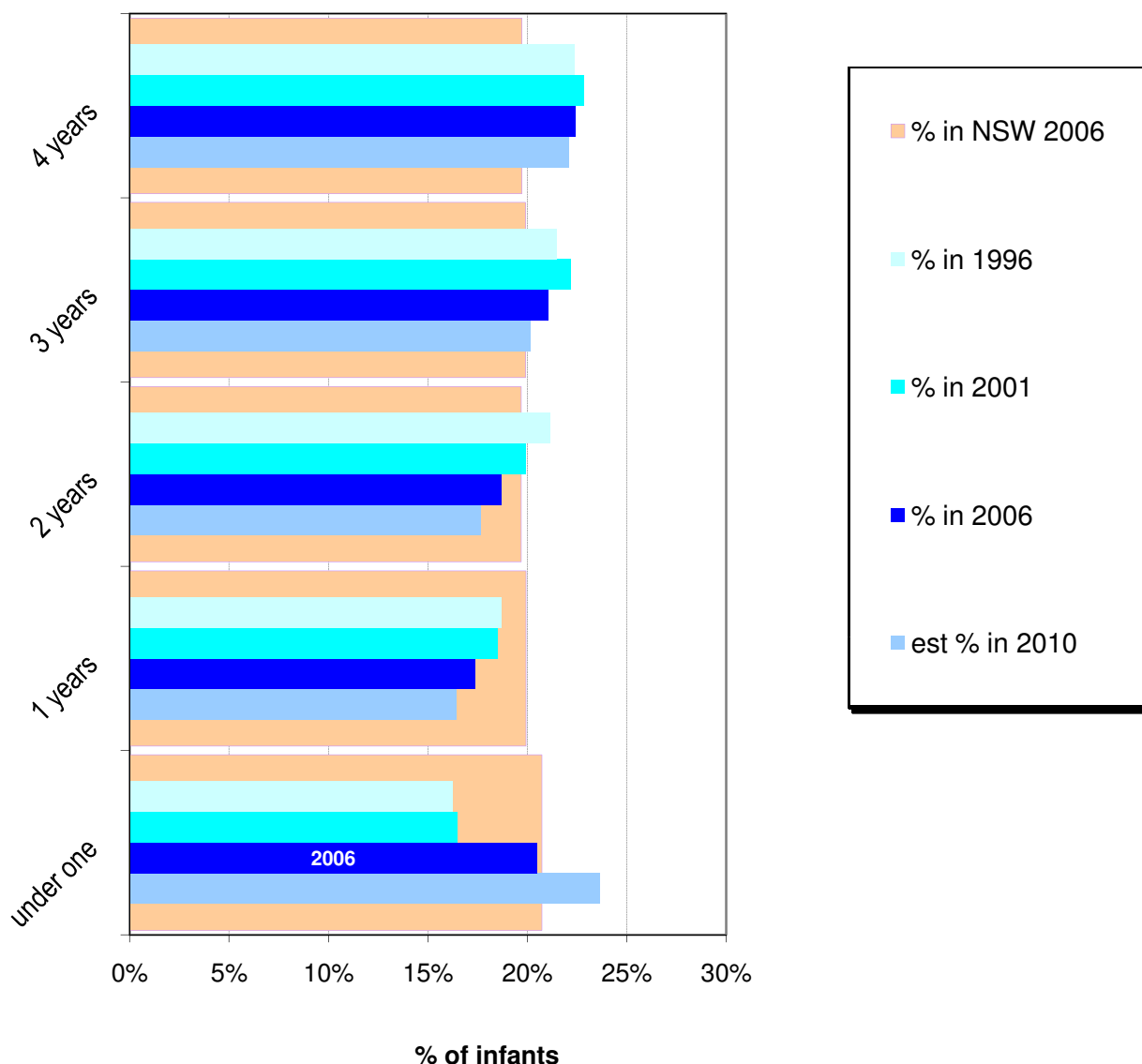
The size of each bubble represents the number of infants in each of the ages. In 2006, the age with the most infants (the largest bubble) was 4 years (22% of all infants); the second most common was 3 years (21%). The least common age (the smallest bubble) was 1 years (17.4%); the second smallest was 2 years (18.7%).

The scattered pattern of the bubbles shows little correlation (4%) between the changes in Bega Valley over 1996–2006 and differences in proportions from NSW for the various ages. This correlation is not significant, indicating that among these ages, changes in Bega Valley over 1996–2006 were unrelated to their differences in proportions from NSW.

Ages of Infants

Bega Valley

1996–2010



The bar chart above shows the proportions of infants in each of the ages. The four narrower bars show the proportions in Bega Valley for 1996, 2001, 2006 and projected to 2010, while the broad background bar shows the proportions across NSW in 2006. The longest bars represent the largest age; in this case, 4 years (for Bega Valley in 2006).

The proportions estimated for 2010 are made by projecting forward the change that occurred over 1996–2006, then adjusting the proportions so they add to 100%. This gives a good indication of what will happen if the trend over 1996–2006 were to continue over the 4 years from mid-2006 to mid-2010.

The most significant growth over 1996–2006 was in the under one age; its share of the infants rose by 4.0% to 20.5%. This growth was 1.9 percentage points higher than NSW's, where this age had 20.7% of the infants in 2006.

Conversely, the biggest decline among the infants was in the 2 years age, whose share of the infants was down 1.3%.

Note: Infants are aged under 5

Ages of Infants	Bega Valley			% in Bega Valley			versus NSW		
	no. in 2006	% in 2006	change in % share, 1996-2006	est % in 2010	% in 2001	% in 1996	% in NSW 2006	Bega Valley difference	Bega Valley's growth diff. 1996-2006
under one	344	20%	up 4.0%	24%	16%	16%	21%	0.3% less	1.9% faster
1 years	292	17%	dn 1.1%	16%	19%	19%	20%	2.6% less	1.2% slower
2 years	314	19%	dn 1.3%	18%	20%	21%	20%	1.0% less	0.5% slower
3 years	354	21%	dn 1.1%	20%	22%	21%	20%	1.2% more	0.6% slower
4 years	377	22%	dn 0.4%	22%	23%	22%	20%	2.7% more	0.4% faster
total of table	1,681	100%	SD: 2.2%	100%	100%	100%	100%	SD: 2.0%	SD: 1.2%
averages	336	20%	dn 0.0%	20%	20%	20%	20%	same	0.0% slower

The change in % share is the difference between the share in 1996 and the share in 2006. The growth difference is the growth in Bega Valley minus the growth in NSW over 1996-2006. Changes or differences that are more than one standard deviation from the average are bold.

Ages of Infants	1996 Census			2001 Census			2006 Census		
	boy	girl	all	boy	girl	all	boy	girl	all
under one	161	178	339	157	135	292	181	163	344
1 years	206	185	391	167	161	328	163	129	292
2 years	214	228	442	176	177	353	161	153	314
3 years	216	233	449	195	198	393	176	178	354
4 years	240	228	468	209	196	405	184	193	377
total of table	1,037	1,052	2,089	904	867	1,771	865	816	1,681

Ages of Infants	1996 Census			2001 Census			2006 Census		
	boy	girl	all	boy	girl	all	boy	girl	all
under one	41,738	39,443	81,181	40,655	38,269	78,924	44,685	42,388	87,073
1 years	42,350	40,509	82,859	43,128	40,889	84,017	43,362	40,376	83,738
2 years	45,239	43,117	88,356	44,124	42,084	86,208	42,597	40,086	82,683
3 years	44,880	42,585	87,465	44,344	42,085	86,429	43,054	40,535	83,589
4 years	45,116	42,713	87,829	44,629	42,134	86,763	42,544	40,273	82,817
total of table	219,323	208,367	427,690	216,880	205,461	422,341	216,242	203,658	419,900